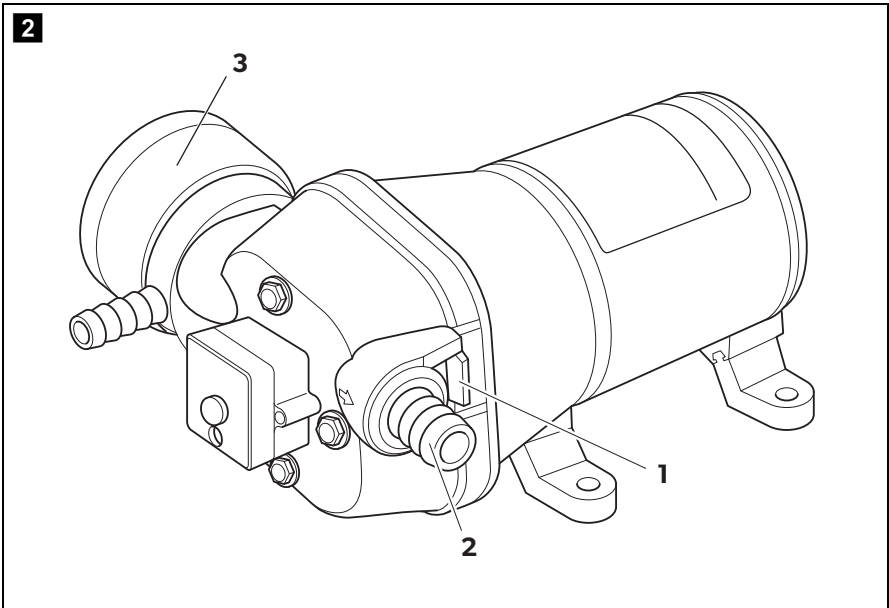
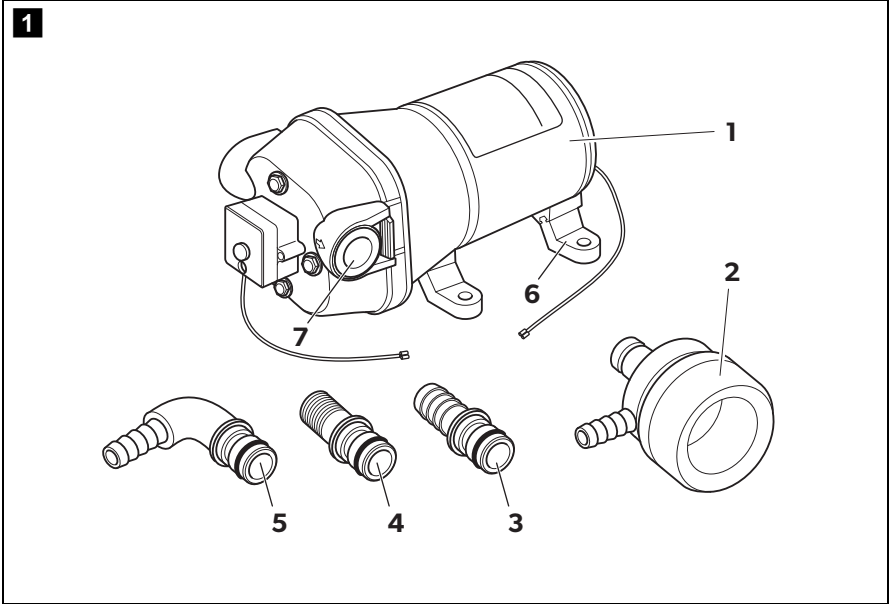


↗ DOMETIC SANITATION PUMPS



PP127, PP1210, PP1217

EN	Water pressure pump	
	Installation and Operating Manual	4



Please read this instruction manual carefully before installation and first use, and store it in a safe place. If you pass on the product to another person, hand over this instruction manual along with it.

Table of contents

1	Explanation of symbols	5
2	Safety notes	5
3	Scope of delivery	7
4	Intended use	7
5	Technical description	7
6	Installing and connecting the pump	8
7	Using the pump.	9
8	Cleaning and caring for the pump	9
9	Troubleshooting	10
10	Warranty	10
11	Disposal	11
12	Technical data	11

1 Explanation of symbols

**DANGER!**

Safety instruction: Failure to observe this instruction will cause fatal or serious injury.

**WARNING!**

Safety instruction: Failure to observe this instruction can cause fatal or serious injury.

**CAUTION!**

Safety instruction: Failure to observe this instruction can lead to injury.

**NOTICE!**

Failure to observe this instruction can cause material damage and impair the function of the product.

**NOTE**

Supplementary information for operating the product.

2 Safety notes

The manufacturer accepts no liability for damage in the following cases:

- Faulty assembly or connection
- Damage to the product resulting from mechanical influences and excess voltage
- Alterations to the product without express permission from the manufacturer
- Use for purposes other than those described in the operating manual

2.1 General safety



DANGER!

- Before you use the device for the first time, check that the operating voltage matches the mains voltage (see type plate).



WARNING!

- Do not operate the device if it is visibly damaged.
- This appliance may only be repaired by qualified personnel. Inadequate repairs may cause serious hazards. Should your appliance need to be repaired, please contact customer services.
- Persons whose physical, sensory or mental capabilities or whose lack of experience and knowledge prevent them from using the device safely should not use it without supervision or instruction by a responsible person.
- **Electrical appliances are not toys.** Always keep the device out of the reach of children.
- Children must be supervised to ensure that they do not play with the device.
- If this device's connection cable is damaged, it must be replaced by the manufacturer, customer service or a similarly qualified person in order to prevent safety hazards.

2.2 Operating the device safely



WARNING!

- Never use the device in rooms where flammable materials are stored or flammable gases have built up. Sparks from the motor could ignite them.



NOTICE!

- Only use the device indoors, never outside.
- Never expose the device to moisture.

3 Scope of delivery

No. in fig. 1 , page 3	Quantity	Description
1	1	Pump
2	1	Coarse filter
3, 4, 5	1	Adapter
6	4	Fastening feet
7	2	Plugs
–	1	Installation and operating manual

4 Intended use

The Dometic PowerPump water pressure pump PP127 (ref. no. 9600000455), PP1210 (ref. no. 9600000456), PP1217 (ref. no. 9600000457), is intended to be used as part of a water system.

The device is suitable for providing water. The pump must not be used for supplying salt water.

5 Technical description

The pump is activated via an in-built pressure switch. When drawing water at the supply point, the pump is turned on.

Mobile living made easy.



dometic.com

**YOUR LOCAL
DEALER**

dometic.com/dealer

**YOUR LOCAL
SUPPORT**

dometic.com/contact

**YOUR LOCAL
SALES OFFICE**

dometic.com/sales-offices

A complete list of Dometic companies, which comprise the Dometic Group, can be found in the public filings of:
DOMETIC GROUP AB Hemvärnsgatan 15 SE-17154 Solna Sweden